

WHITE
CITY
PLACE

Shaping the next
generation of
life science



LIFE SCIENCES AT WHITE CITY PLACE

Specialised lab space in a
powerful London ecosystem

White City Place is shaping the future of medicine

Home to Novartis, Engitix, Synthace, Autolus and others, our community is reimagining medicine and changing lives. They're personalising cancer drugs to the patient, automating experiments that were once impossible, and pioneering CAR T-cell therapies. That's because we create laboratories and offices customised to the people who use them.



WHITE CITY'S KNOWLEDGE CLUSTER

Knowledge clusters create powerful collaborative environments. They represent the opportunity for people from diverse backgrounds to interact, share ideas and learn from one another.



1 ^

- 1 Presentation Room, Westworks
- 2 Spacious outdoor gathering areas



2 v

Unlock the power of proximity

White City Place is at the heart of the White City Innovation District. Next door, Imperial's White City campus is a £2bn investment into a new 23-acre site, combining world-leading research, collaboration with the private sector and community engagement. Looking further afield, this is part of the Golden Triangle: Europe's most influential life science cluster that includes Oxford, Cambridge and London.

Discover White City's multidisciplinary mix

Here, organisations' expertise encompasses the natural world, engineering, health and the data revolution. But what makes White City special is its talent for bringing together category-defining companies, incubator hubs and scale-up space – all in one neighbourhood.



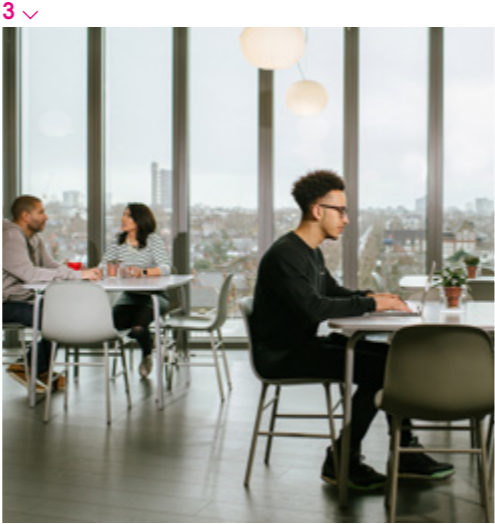
2 ^

Multidisciplinary research
The multidisciplinary approach explores four key areas: discovery and the natural world, engineering solutions, health and leading the data revolution.



1 v

Central Working White City
This vibrant shared workspace connects businesses to Imperial's extensive network of academics and researchers. It provides space for more than 400 start-ups, scale up and corporates. Large companies like Airbus have taken space in Central Working.



3 v

- 1 A scientist at Hammersmith Hospital
- 2 Imperial-led toxicology research
- 3 Co-work space at Central Working White City
- 4 Community engagement at the Invention Rooms
- 5 Invention Rooms maker spaces

The Invention Rooms
The community is encouraged to take part. At the Invention Rooms, local children are invited to the campus to get hands-on experience in making and inventing at events and after-school workshops.



4 ^



5 v

Hammersmith Hospital

Hammersmith Hospital is just around the corner from White City Place. Founded in 1902, today it's world renowned for its heart and kidney treatments, and a key location for Imperial College medical research. A recent five-year strategic plan outlined the hospital's ambition to become a research leader across all healthcare professions.



1 ^

Molecular Sciences Research Hub

The new research base for Imperial's Department of Chemistry hosts a team of nearly 800 scientists, clinicians, engineers and business partners.



4 ^

- 1 Hammersmith Hospital
- 2 Upstream community events
- 3 Translation and Innovation Hub (I-HUB)
- 4 The new Molecular Sciences Research Hub
- 5 Students at Imperial White City

2 v



Upstream

This collaboration between Imperial and Hammersmith & Fulham council is a network to support and promote biotech, digital and creative industries in the borough.

3 v



5 v



- 1 The Michael Uren Biomedical Engineering Research Hub (BmE Hub)
- 2 Scale Space shared amenity and collaboration areas
- 3 Visualisation of the forthcoming School of Public Health, opening in 2023



2 ^

Scale Space

Businesses have a special place at Imperial's White City Campus. Scale Space is designed to give businesses the support they need to turn innovation into growth, through working alongside leaders in research and business building. There's also the option of taking laboratory space.

Michael Uren Biomedical Engineering Hub

This architecturally intriguing biomedical hub will bring together a team of 500 scientists, pioneering the future of medical technology.

1 v



3 ^

School of Public Health

Imperial's School of Public Health has been lauded as the UK's joint top institution for public health research. At the White City campus, the new facility will enable the school to innovate new approaches to the most pressing healthcare challenges.

Revitalised White City Place

White City Place is only one part of a significantly changing White City. The former television production quarter has given way to substantial investment to provide mixed-use developments, such as the revitalised BBC headquarters at Television Centre, and Westfield London, whose £6bn expansion has designated it the largest shopping centre in Europe.

Imperial College London White City Campus North

- World-leading science and technology university
- First phase completed 2016
- New £3bn research and innovation campus
- 1,500 researchers

Imperial College London White City Campus South

- 17-acre site with more than 50 companies
- Homes and innovation facilities
- Home to Blenheim Chalcot's Scale Space

The WestWorks

- Novartis
- Takeda
- Engitix
- Synthace
- InVox Pharma

The MediaWorks

- Autolus

White City Place

- 1.5 million sq ft business district
- New central avenue with retail, restaurants, gyms and gardens
- Existing 5,000-strong community

Gateway Central

Gateway West

White City Station

Berkeley St James

- Over 1,400 homes
- New 5 acre public park
- Retail in the railway arches

Television Centre

- 950 new homes
- Soho House
- Television studios
- Restaurants
- Publicis
- The White Company
- Hotel and gym/spa
- BBC Worldwide

Wood Lane Station

1 Wood Crescent

- Newly complete 120,00 sq ft building
- Home to PVH, Tommy Hilfiger & Calvin Klein

Westfield London

- 2.6 million sq ft of world class retail and leisure
- The largest shopping centre in Europe
- 230,000 sq ft John Lewis flagship at Westfield
- 4,200 car parking spaces

Hammersmith Park

OUR CAMPUS

West London's creative campus,
where innovation thrives

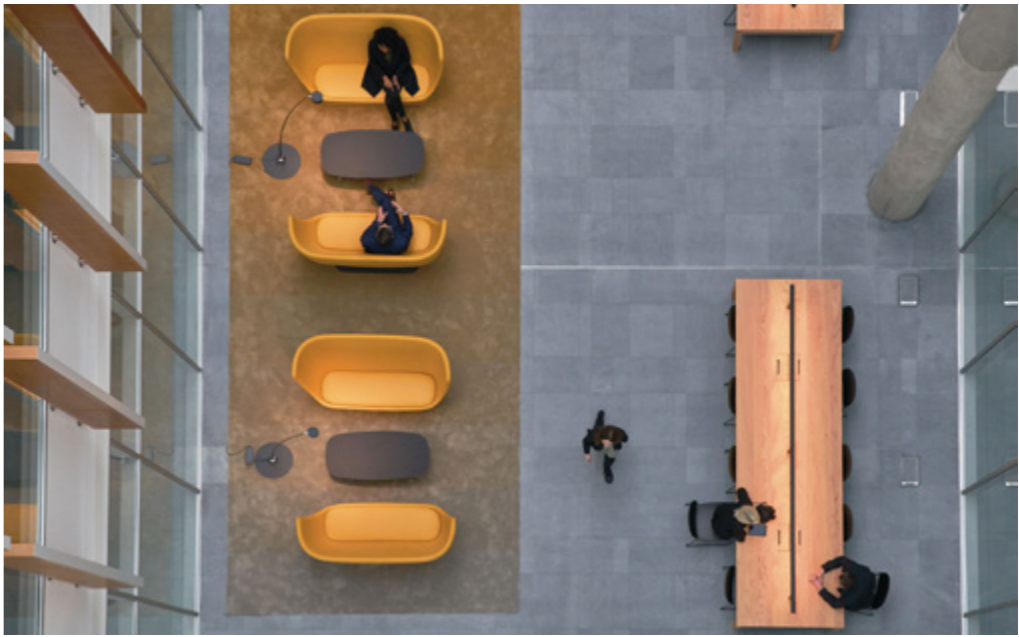
Join a thriving working community



1 ^

Just one minute walk from White City tube station, White City Place is a working community where innovative organisations thrive alongside business leaders and cultural institutions. It is also a hub for fitness, community and foodies. This mix of many different minds is what makes for such a vibrant, varied experience every day. Relax, eat and drink around bustling avenues — or hold outdoor meetings in comfort with WiFi-enabled public realm.

- 1 Green spaces to relax
- 2 MediaWorks open space
- 2 Central Avenue



2 ^

3 v



Lifestyle and Leisure at White City Place

Creativity and innovation doesn't happen in silos. White City Place offers spaces to gather, for the community to meet and share ideas.



1 ✓



2 ^



3 ^



1 Waka

Grab-and-go lunches inspired by the Nikkei cuisine of Peru – a delicious blend of Japanese and Peruvian flavours.

2 Dear Grace

Dear Grace is an all-day space open from breakfast onwards, a place for work during the day while serving up cocktails and small plates after work.

3 The Athenian

Street food inspired by the Greek capital, along with craft beers and wines from the region.

4 Coco Di Mama

Coco di Mama is a string of Italian home-style lunch spots that's recently opened an outpost at White City.



4 ✓



2 ^



1 ^



4 ^

1 The Pod

For anyone with a story to tell, The Pod is a soundproof, mobile podcasting studio outfitted with professional grade recording equipment.

2 The Studio

White City Place occupiers benefit from a multimedia presentation space, that's fully enabled for video conferencing, livestreaming and video recording.

3 Lifestyle

A dedicated lifestyle concierge is here to help, and sometimes that means bringing in an ice cream truck to ring in the summer with a free ice cream day.

4 Summer Screen

White City Place's dedicated events team offers a full suite of activations to keep things lively on campus. For four months in the summer, the summer screen plays live sports and weekly films.

5 Exhibitions

The Royal College of Arts has several faculties operating out of White City Place, hosting inspiring exhibitions and performances that are open to all.



3 v



5 v

One of London's most connected areas

White City Place sits in the middle of a vast transport network. With three underground lines at two nearby stations, the City, West End and east London are all easily accessible.



1 v

- Travel time
- 7 mins Paddington
 - 10 mins Ealing Broadway
 - 12 mins Bond Street
 - 18 mins Clapham Junction
 - 21 mins King's Cross / St Pancras
 - 22 mins Farringdon
 - 23 mins Waterloo
 - 24mins Liverpool Street Station
 - 30 mins Heathrow
 - 32 mins Canary Wharf



2 ^

¹ White City connects to the Central Line
² Wood Lane, connecting to the Circle and Hammersmith & City lines

Local area

Thanks to significant investment into this revitalising area, White City Place is surrounded by excellent places to eat, shop and decompress.



1 ^



2 ^

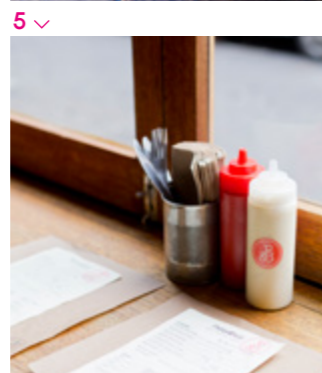
Television Centre:
There's plenty of fun to be had in White City

Down Wood Lane from White City Place the former BBC headquarters have been reimaged into a mixed-development with residences, restaurants and a new Soho House members' club. Both Publicis Media Group and The White Company now house their HQs in the adjoining office space.

4 v



3 v



5 v

- 1 Bluebird
- 2 White City House
- 3 Cricket
- 4 Television Centre's landscaped forecourt
- 5 Patty & Bun
- 6 More dining just down the road at Westfield
- 7 The Apple Store is one of many major retailers at Westfield

Westfield London:
A world of convenience is a short walk away

Westfield opened their first London shopping centre in White City, and recently expanded its offering to more than 2,600,000 sq ft of retail and the largest John Lewis in the UK. Westfield London offers an enviable collection of high street and luxury brands and restaurants. There is also a 17-screen cinema, boutique bowling and Waitrose flagship.



6 ^



7 v





There are several gathering spaces around White City Place, such as the beautifully landscaped forecourt at Television Centre.



The reception area in The WestWorks features plugged-in hot-desking areas, WiFi and a café.



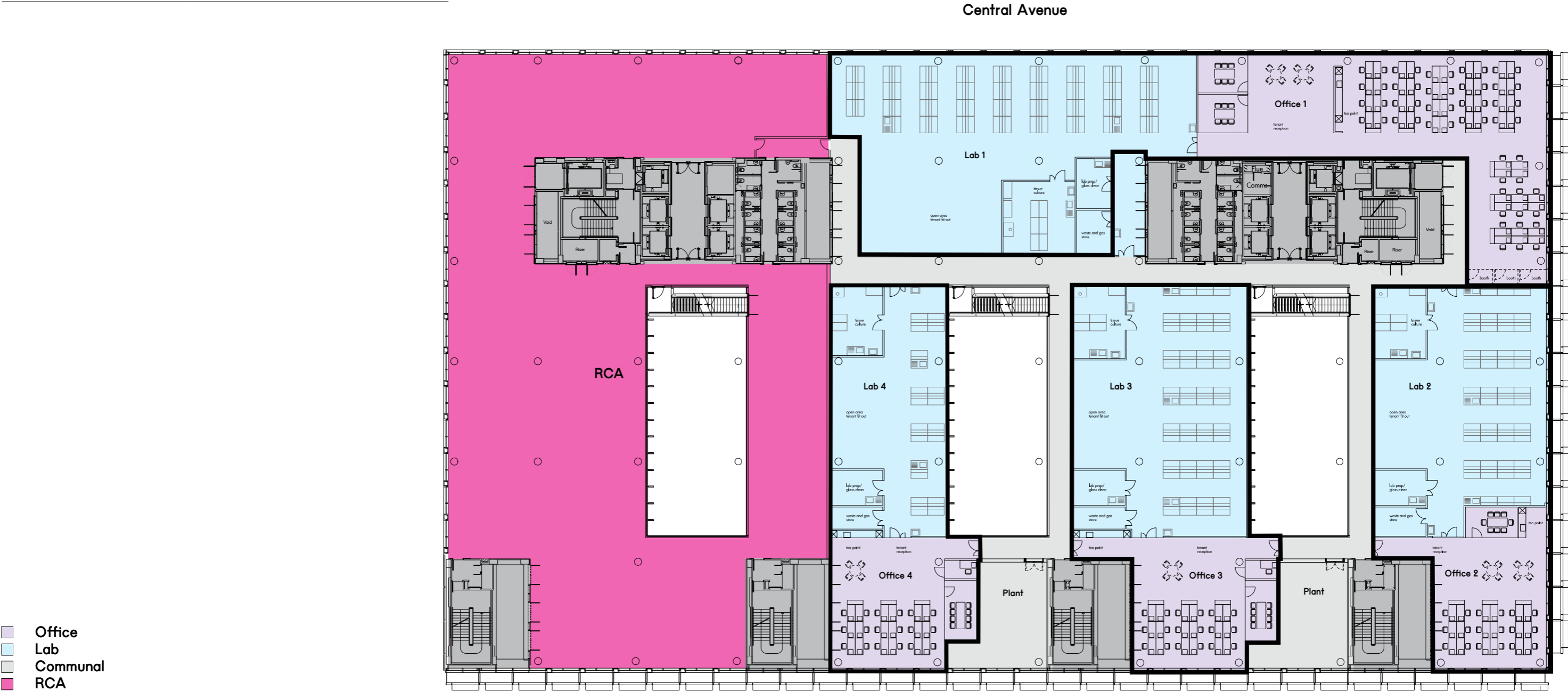
Whether you're hosting a panel discussion, lecture or film screening, the Studio provides a fully accessible presentation and performance space for up to 98 people.



White City Place offers highly flexibly office and lab spaces that can be fitted out to several different configurations.

Floor plan

	Lab sq ft	Office sq ft
Unit 1	5,651	4,026
Unit 2	3,541	1,625
Unit 3	3,746	1,722
Unit 4	2,486	1,615
Total	15,425	8,988



LAB SPACE CUSTOMISED TO YOU

We work with life science organisations to create
the right workplace for your requirements

Specification

Category 5 water system and Vulcathene drainage

Units from 5,000-70,000 sq ft

Up to 60:40 lab to office ratio

Large capacity service lifts

Enhanced lab ventilation

Designated safe storage areas

Lab benches

Wash hand basin and eye wash station

1200mm wide Fume cupboard with connected roof discharge

Cat 6 flood wiring high and low level

Fibre comms connected to on-floor co-location server room

Office furniture

Small power (generator backed)

Tea point/kitchen



Discover who's here

“White City is quickly becoming one of the UK's life science and technology districts”

Haseeb Ahmad,
President for Europe, Novartis



VIVAN
THERAPEUTICS

Taking the trial and error out of cancer treatment: Vivan Therapeutics replicates patients' genetic profiles and uses them to screen thousands of drug cocktails. The result is a unique combination of drugs tailored to every patient's specific tumour.

ENGITIX
THERAPEUTICS

This growing biotechnology company has joined White City following a series of high-profile deals, which leverage its discovery platform for improving the success rates of drug discovery and development.

Autolus

The biopharmaceutical company is developing next-generation, programmed T cell therapies for cancer treatment. Autolus, which was valued at US\$534m as of summer 2018, occupies 33,000 sq ft at White City Place.

open
CELL

70 shipping containers in White City Place have been transformed into affordable biolaboratories that also provide logistical support for new companies. Open Cell is an innovative environment for biotech prototyping.

 **NOVARTIS**

The Switzerland-based pharmaceuticals giant Novartis specialises in innovative medicines, cost-saving pharmaceuticals and eye care. Its new UK headquarters has now relocated to White City Place.



The new 12,000 sq ft office and lab of Takeda is here at White City Place. The company specialises in developing improved immunotherapies for the treatment of cancer and other diseases.

invoX

Through investing in and acquiring pharma companies, Invox is creating a biopharmaceutical platform with a portfolio of innovative drugs that address unmet healthcare needs. Invox are particularly focussing on cancer and respiratory diseases.

SYNTHACE ■■

This young biotech based at White City Place is building Antha, a powerful software platform that “gives biologists sophisticated, flexible and integrated control over lab hardware.”

Looking for lab space? Talk to us

Cushman & Wakefield

Andy Tyler
Joel Randall
Charles Dady
Henry Harrison
Jamie Renison
*44 (0) 20 7935 5000

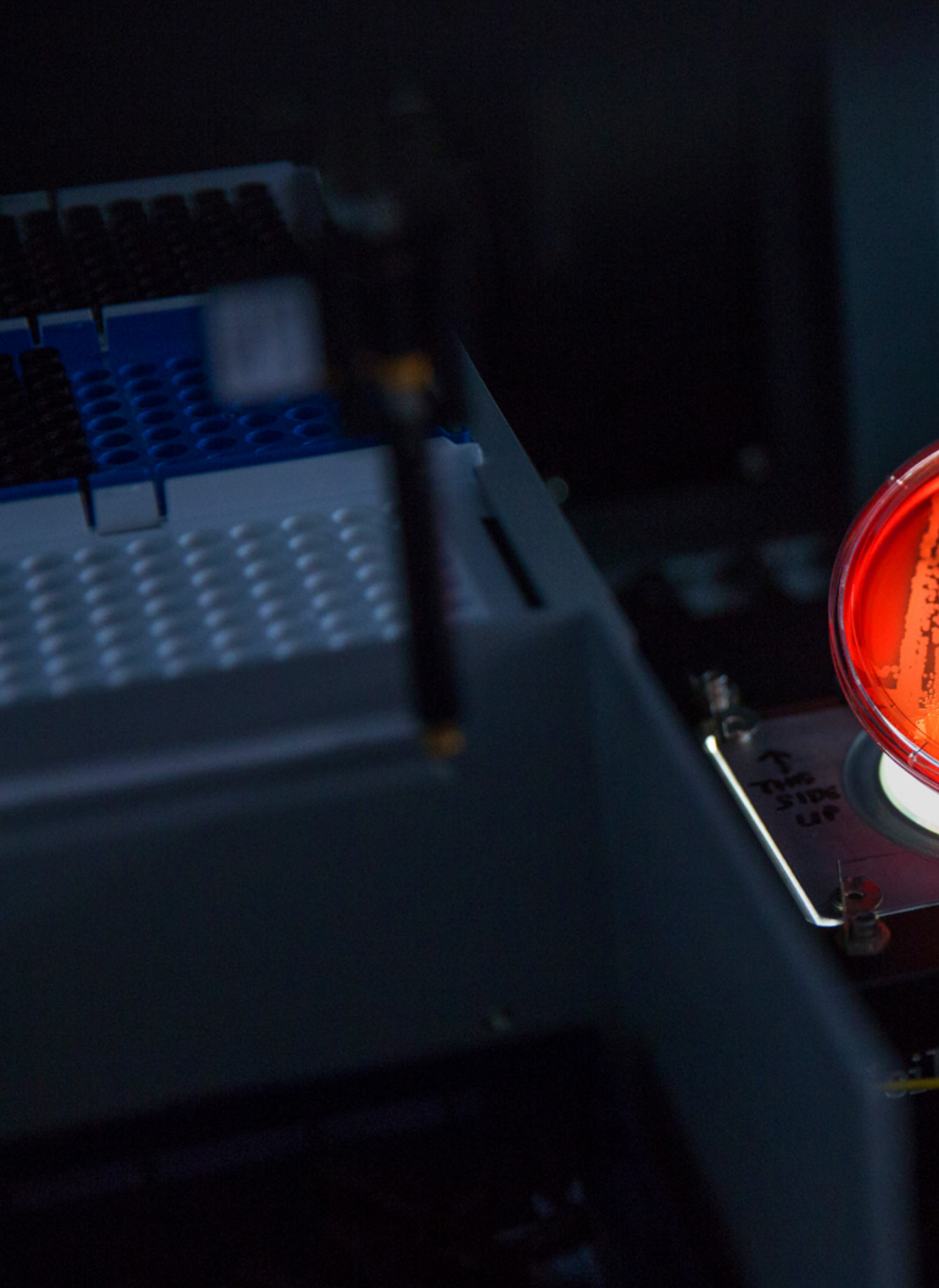
Knight Frank

Ian McCarter
Jonny Lee
Roddy Abram
Andy Nixon
Emma Goodford
*44 (0) 20 7629 8171

White City Place is a development by Cadillac Fairview, managed by Stanhope. The Gateway is a development by Mitsui Fudosan and Alberta Investment Management Corporation with Stanhope.

Misrepresentation Act:

Knight Frank and Cushman & Wakefield LLP for themselves and for the lessors of this property whose agents they are give notice that: (1) The particulars are set out as a general outline only for the guidance of intending lessees, and do not constitute part of an offer or contract; (2) all descriptions, dimensions, references to condition and necessary permissions for use and occupation, and other details are given in good faith and are believed to be correct, but any intending tenants should not rely on them as statements or representations of fact but satisfy themselves by inspection or otherwise as to the correctness of each of them; (3) no person in the employment of Knight Frank and Cushman & Wakefield LLP has any authority to make or give representation or warranty whatever in relation to this property. October 2023.



↑ THIS SIDE UP